

Vtek

Controls™

SERIES 31CF

3 PC 800 / 1000 WP



Series 31CF - 3 Pc 1000 WP

Design Specifications

- Full Port Sizes : 1/2" – 4" (DN 12 – DN 100)
- Body Materials: CF8M / CF3M / Alloy 20
- Seats: TFM1600, PTFE
- ISO 5211 Direct Mount
- Full Port Pressure rating : 1/2" – 2" 1000psi,
2-1/2" - 4" 800psi
- Blow - Out Proof Stem
- Food & Beverage Applications
- Internal Polish to SF5 0.5 um (40 um avail)
* Surface with E/P (Electric Polish)

Standards

- ASME EC 1935 / 2004, EU
10/2011
- Quality Assurance: ISO 9001, 5209
- Inspection and Test: API 598
- TA-Luft, ISO-15848



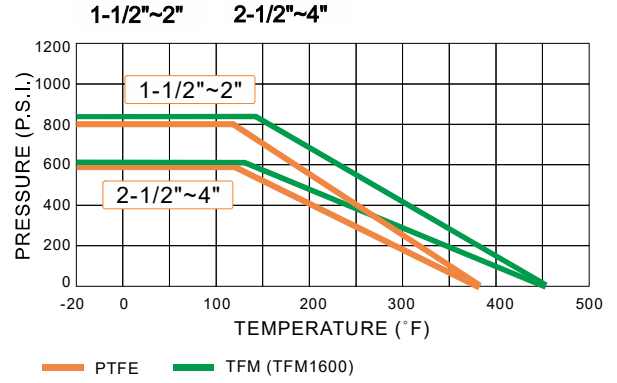
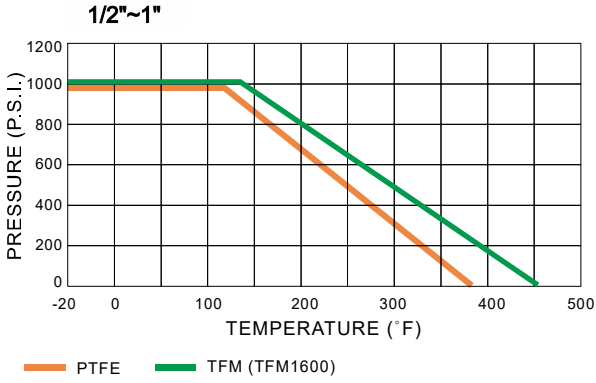
Number:68-00



Regulation (EC) No.
1935/ 2004

Data:

Pressure Vs. Temperature Chart

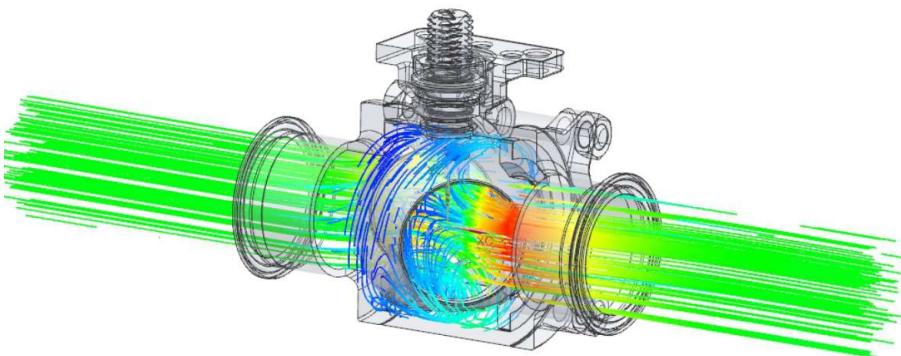


Breakaway Torque (RTFE) & Cv Value

SIZE.	Nm		Inch-Lb		Cv	
	Full port	Red. port	Full port	Red. port	Full port	Red. port
1/2"	7	-	62	-	15	-
3/4"	7	-	62	-	40	-
1"	11	-	97	-	70	-
1-1/2"	24	-	265	-	250	-
2"	35	-	310	-	430	-
2-1/2"	50	-	664	-	700	-
3"	65	-	832	-	1100	-
4"	102	-	1030	-	2000	-

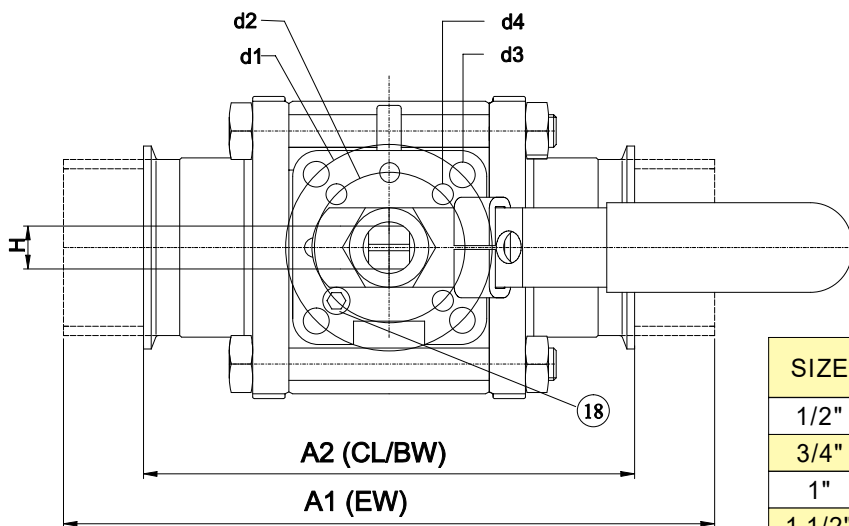
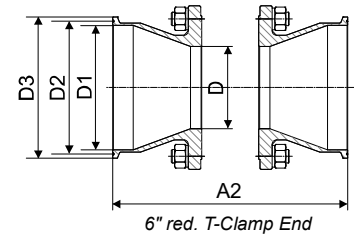
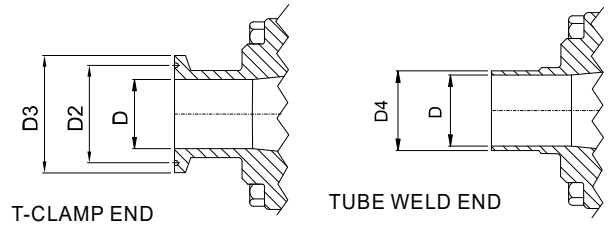
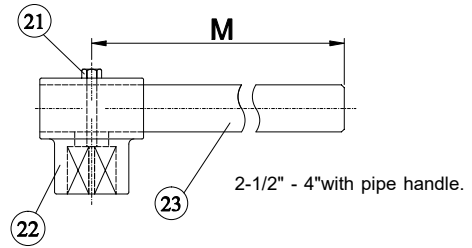
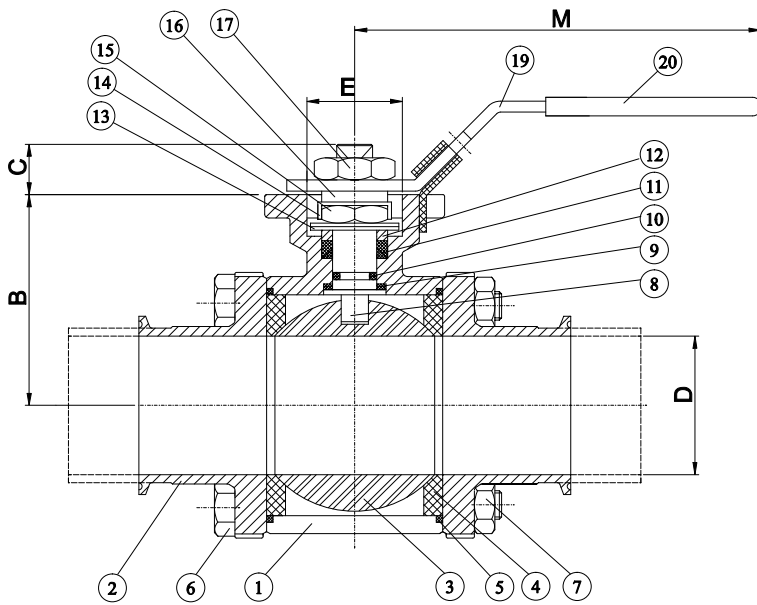
Break Away Torque 30% safety factor included. Standard valves are assembled with silicon-free based lubricant.
Torque for dry gas applications, please consult factory.

Self Cleaning / Flushing Design



The Series CF31 valve can be offered with a SELF-CLEANING/ FLUSHING design. The valve will clean itself by the media while it flows through the valve, the special designed ball lets the media go through the valve cavity and flush the deposited media and substance left in the valve.

Dimensions:



SIZE	D	D1	D2	D3	D4
1/2"	9.6	-	21.7	25	12.7
3/4"	15.8	-	21.7	25	19.05
1"	22.1	-	43.5	50.4	25.4
1 1/2"	34.8	-	43.5	50.4	38.1
2"	47.5	-	56.5	63.9	50.8
2 1/2"	60.2	-	70.5	77.4	63.5
3"	72.9	-	83.3	90.9	76.2
4"	97.4	-	110.3	118.9	101.6
* 6", red.	97.4	146.85	156.9	166.9	-

DIMENSIONS (mm)

SIZE	A1	A2	B	C	d1	d2	d3	d4	E	H	M	ISO 5211 Pattern
1/2"	124.4	88.9	38	9.5	42	36	6.0	6.0	25	9	135	F03/ F04
3/4"	142.2	101.6	38	9.5	42	36	6.0	6.0	25	9	135	F03/ F04
1"	162.3	114.3	48	14	50	42	7.0	6.0	30	11	155	F04/ F05
1 1/2"	182.8	139.7	60	18	70	50	9.2	7.0	35	14	205	F05/ F07
2"	193.0	158.8	69	18	70	50	9.2	7.0	35	14	205	F05/ F07
2 1/2"	254.1	171.5	89	20	102	70	11.3	9.0	55	17	300	F07/ F10
3"	276.9	196.8	98	20	102	70	11.3	9.0	55	17	300	F07/ F10
4"	304.9	241.3	130	26	125	102	13.5	11.3	70	22	350	F10/ F12
* 6", red.	-	328.3	130	26	125	102	13.5	11.3	70	22	350	F10/ F12

* Contact Vtek Controls

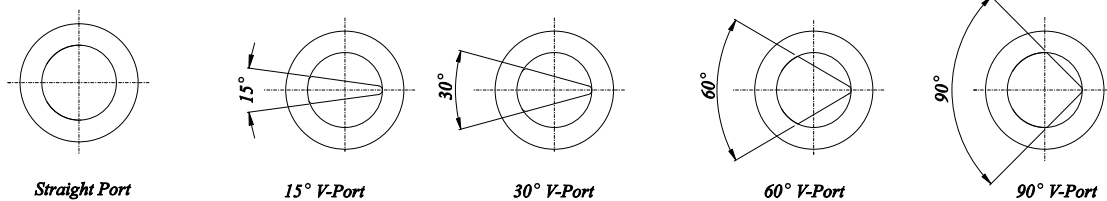
Materials:

MATERIALS LIST

NO.	NAME OF PARTS	MATERIALS	OPTION	QTY
1	BODY	A351 Gr. CF8M	A351 Gr. CF3M	1
2	END CAP	A351 Gr. CF8M	A351 Gr. CF3M	2
3	BALL	CF8M	CF3M	1
4	BALL SEAT	PTFE	TFM1600	2
5	GASKET	PTFE	PTFE	2
6	BODY BOLT	SS 304	SS 304	4*
7	BODY NUT	SS 304	SS 304	4*
8	STEM	SS 316	SS 316L	1
9	THRUST WASHER	RPTFE	RPTFE	1
10	O-RING	VITON (FDA)	VITON (FDA)	1
11	STEM PACKING	PTFE	TFM	1 SET
12	GLAND WASHER	SS 304	SS 304	1
13	DISC WASHER	SS 301	SS 301	2
14	NUT STOPPER	SS 304	SS 304	1
15	STEM NUT	SS 304	SS 304	1
16	SPACE WASHER	SS 304	SS 304	1
17	HANDLE NUT	SS 304	SS 304	1
18	STOP PIN	SS 304	SS 304	1
19	HANDLE	SS 304	SS 304	1
20	SLEEVE	PLASTIC	PLASTIC	1
21	SET BOLT	SS 304	SS 304	1
22	Handle HEAD	CF8	CF8	1
23	PIPE HANDLE	SS 304	SS 304	1

* 4" with 6 bolts & nuts

V-BALL FOR MODULATING CONTROL



V-Ball Control & Options:

Series 31 V-Port Control Ball Valves

V-Port ball valves are used to control the flow. It delivers a precise flow control while retaining the durability and tight shutoff characteristics of a ball valve, excellent for regulating service. It is a compact and economical solution compared to traditional systems.

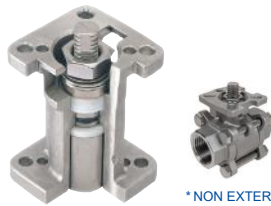
Available in 30°, 60°, and 90° V-notch configurations. V-Port ball valves feature an integrated V-notch machined directly into the ball, not a seat insert, this design not only improves flow characteristics but also eliminates the need for frequent seat replacement.

Options:

Spring Handle



Fugitive Emissions*



*NON EXTERNAL
ADJUSTING TYPE ONLY

V-Ball



Ordering:

Series	Port	Body Material	Ball	Stem	End Connection	Size
CF31	FP - Full Port V1 - V-port 15 Deg V3 - V-port 30 Deg V6 - V-port 60 Deg V9 - V-port 90 Deg	S - Stainless Steel L - 316L St. Steel A - Alloy 276	S - 316 SS L - 316 L A - Alloy 276	S - 316 SS L - 316 L A - Alloy 2276	SC - Tri-Clamp ST - Sanitary Tube Ends	0050 - 1/2" 0075 - 3/4" 0100 - 1" 0150 - 1-1/2" 0200 - 2" 0250 - 2-1/2" 0300 - 3" 0400 - 4"
Seats / Filler	Packing	Body Seal	Operator	Options	Stem O-ring	
P - PTFE T - TFM™-1600	P - PTFE T - TFM™-1600	P - PTFE T - TFM™-1600	Blank - Bare Stem L - Locking Handle G - Gear Operated O - Oval Handle S - Spring Return Handle	Blank - No Options V - Vented Ball O - Oxygen Cleaned F - Fugitive Emissions Bonnet	Blank - Viton Standard 4 - Kalrez E - EPDM S - Silicone	

Vtek Controls, LLC reserves the right to make revisions to its product, specifications, literature, and related information without notice.

Please visit our Website for the latest information and updates.



Vtek Controls, LLC
420-H Wards Corner Rd
Loveland, OH 45140
Ph 513-928-3630
www.vtekcontrols.com